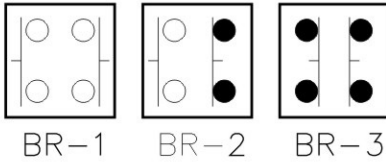


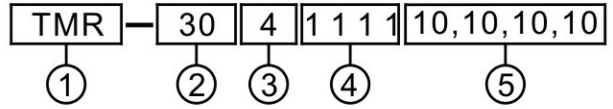
tend MONOLEVER SWITCH

FEATURES

1. You can smoothly and swiftly handle the lever in four directions -upward, rightward, downward and leftward.
2. Three alternatives of movement are attainable in each direction: Go-on, auto-return and blockade-enforcing.
3. You are free as you like to operate in four, three or two directions with the switch.
4. Rubber bushing is water-proof, oil-resistant, and bust-preventive.



MODEL DESIGNATIONS



Designation	Signal	Description
1.Type	TMR, TMRS TMS, TMSN TMRN, TMRSN	Round Square Round (rubber handle)
2.Mounting Hole	30	Ø30m/m
3.No. of Contact Blocks Fitted	1~4	1~4
4.Movement way	1 2 0	Go-on Auto-Return Blockade-enforcing
5.Type of Contact Blocks Fitted	00 10 20 01 02 11	None 1a (1NO) 2a (2NO) 1b (1NC) 2b (2NC) 1a1b (1NO-1NC)

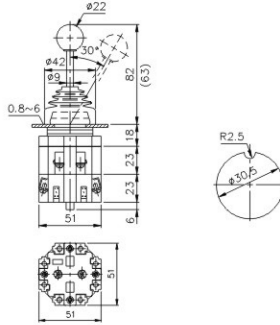
RATED CURRENT

AC	110VAC	220VAC	440VAC
	10A	6A	3A
DC	110VDC	220VDC	
	2A	1A	

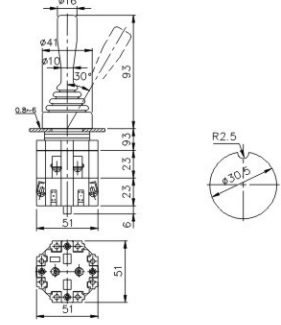
Ambient temperature	-20°C ~ +60°C	
Continuous passable current	Resistivity values in the following 15 mΩ (initial value)	
Insulation Resistance	DC500V imposed voltage, measured in more than 100 MΩ	
Dielectric Strength	AC2500V acceptable voltage tests a minute.	
Service Life	Machinery	1,000 / hour opening and closing frequency,
	Electric	500,000 or more times

DIMENSIONS

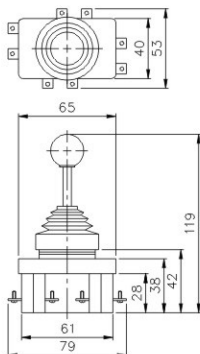
TMR-302



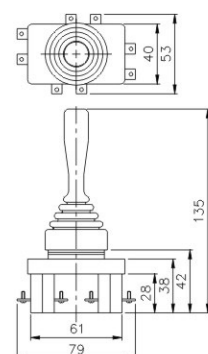
TMRN-302



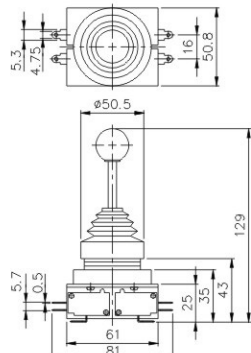
TMS-304



TMSN-304



TMRS-304



TMRSN-304

