

SOLENOID-OPERATED RELIEF VALVE (HRD)

B

PRESSURE CONTROL VALVES



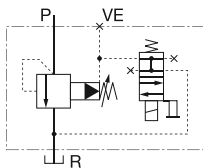
This type of valve consists of a relief valve and a solenoid valve installed at the vent port (VE) of the relief valve, assembled in one unit. It operates as a relief valve and, at the same time, enables unloading operation by opening/closing the vent port.

Features

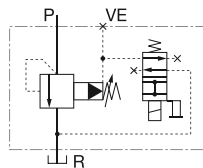
1. Since an oil-immersed solenoid is used the plunger operates in the fluid, alleviating knocking sounds and ensuring quiet valve operation.
2. External oil leakage is eliminated, even after a long time in use, since the valve has no sliding seal parts.
3. Wiring work is simplified.
4. Dust- and water-proof levels are IP65 in accordance with IEC standards.
5. A grounding terminal is standard equipment (AC only).
6. Permissible back pressure considerably increased.
7. A shockless valve that reduces the surge pressure generated at unloading is standard.
8. Surge killer is standard equipment.
9. CE compatible product

Without Shockless Valve

Normally-open Type

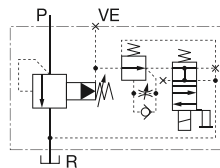


Normally-closed Type

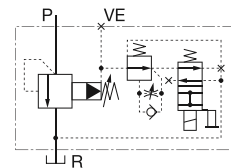


With Shockless Valve

Normally-open Type



Normally-closed Type



Solenoid valve model

For normally-open type

AC100 V: HRD3-1-B-WYR1-P

AC200 V: HRD3-1-B-WYR2-P

DC24 V: HRD3-1-B-WYD2-P

For normally-closed type

AC100 V: HRD3-2-B-WYR1-P

AC200 V: HRD3-2-B-WYR2-P

DC24 V: HRD3-2-B-WYD2-P

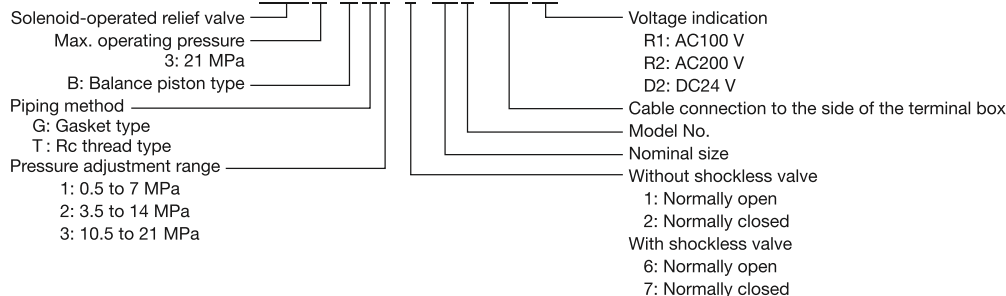
For the solenoid characteristics, refer to page C-6.

The maximum permissible back pressure at the R port is 7 MPa or less.

If subplate SHR**T(A) is necessary, please order one separately.

Description of the model designation

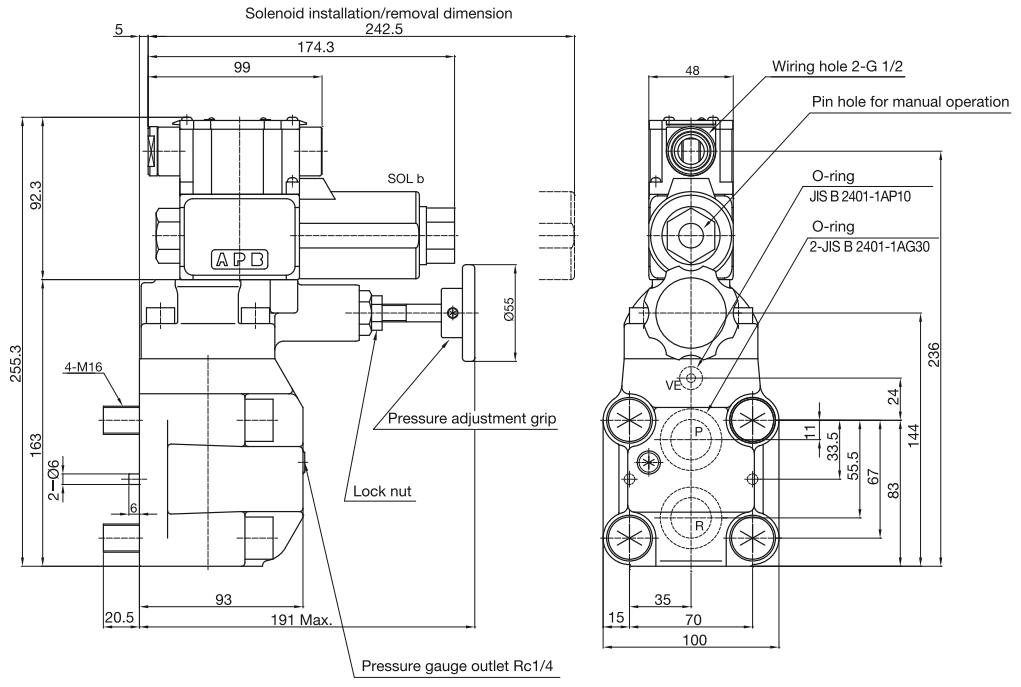
HRD3-BG1-1-04B-WYR1



Specifications

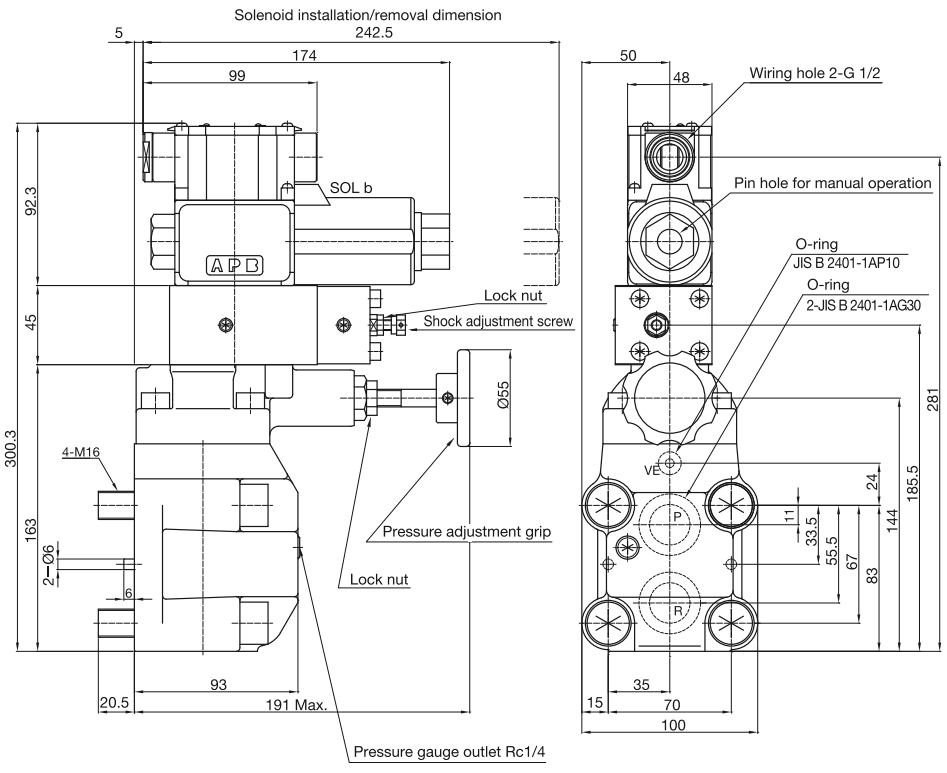
Nominal size	Rated flow rate (L/min)	Max. operating pressure (MPa)	Pressure adjustment range (MPa)	Model	
				Thread type	Gasket type
04	40	21	1: 0.5 to 7	HRD3-BT*-*-04B-WY**	HRD3-BG*-*-04B-WY**
			2: 3.5 to 14		
06	120		3: 10.5 to 21	HRD3-BT*-*-06B-WY**	HRD3-BG*-*-06B-WY**

HRD3-BG* $\frac{1}{2}$ -06B-WY**



Mass: 9.1kg

HRD3-BG* $\frac{6}{7}$ -06B-WY**



Mass: 10.4kg