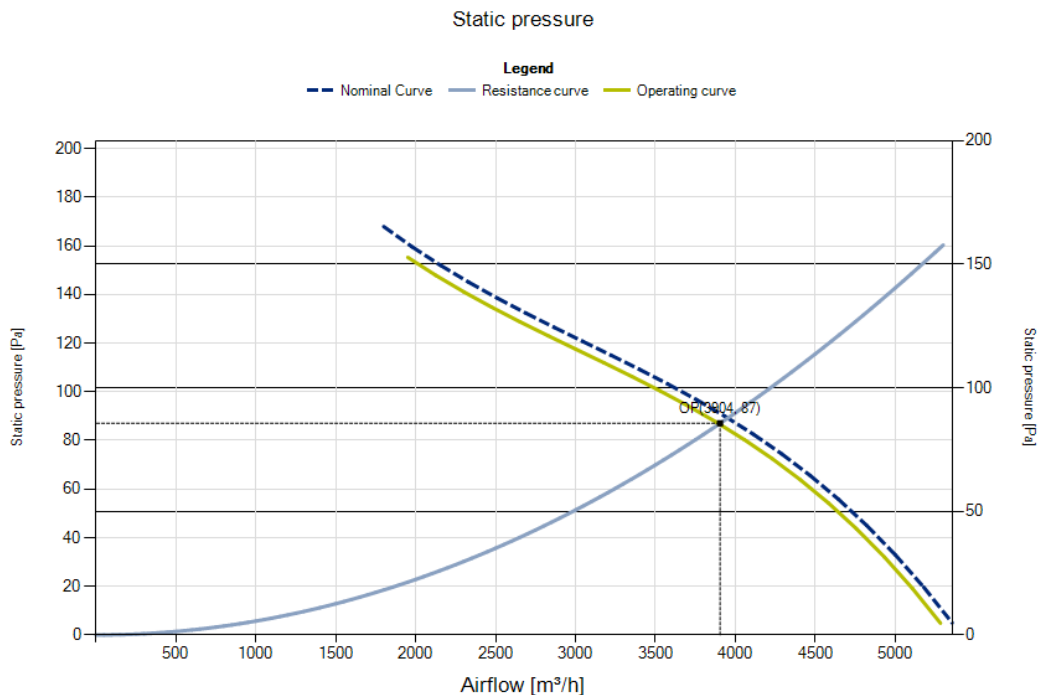


R10R-45APS-ES50B-09C05

EC Axial Fans with with guard grill with guard grill

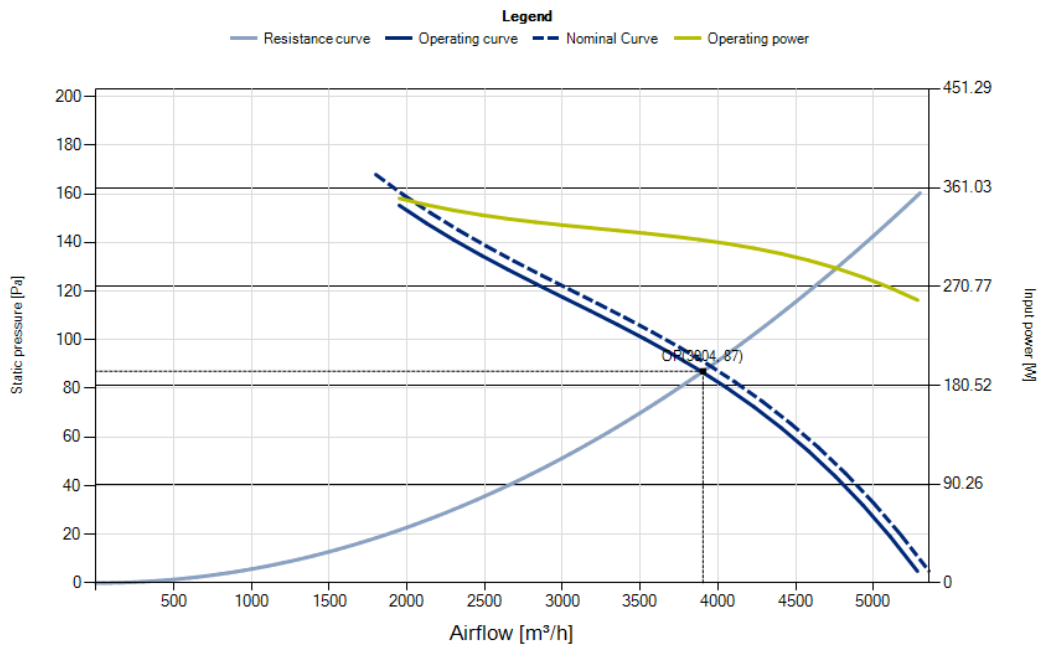
Ordering code: 0310-4-0127

Operating Point		Nominal data		Erp Data	
Air flow [m3/h]	3904	Phase [~]	1	Overall efficiency [%]	48.3
Static pressure [Pa]	87	Voltage [V]	230 / 230	Measurement cat.	A
Density [kg/m3]	1.2	Voltage range [V]	200-240	Efficiency category	static
Total pressure [Pa]	114	Frequency [Hz]	50 / 60	Efficiency grade N	57.8
Rotation speed [1/min]	1262	Input power [W]	300 / 300	Variable speed drive	INTEGRATED
Input power [W]	312	Input current [A]	2.05 / 2.05	Power input [kW]	0.32
Current [A]	2.07	Nominal speed [rpm]	1280 / 1280	Airflow [m3/h]	3904
Total efficiency [%]	40	MinimalSpeed [rpm]	200	Pressure drop [Pa]	131
Static efficiency [%]	30	MaxControlVoltage [V]	9.5	Rotational Speed [rpm]	1281
Sound power Outlet [dB]	84	MinControlVoltage [V]	1.2	Specific ratio	1.00
Weighted sound power Outlet [dB(A)]	80	Min. ambient temp. [°C]	-25		
Sound power inlet [dB]	83	Max. ambient temp. [°C]	65		
Weighted sound power inlet [dB(A)]	79	Protection class	IP54		
Sound pressure [dB]	69	Insulation class	130		
Weighted sound pressure [dB(A)]	68	Capacitor [µF/450V]	N / A		
		K. Value	N / A		
		Connection	N / A		
		Weight [Kg]	5.3		

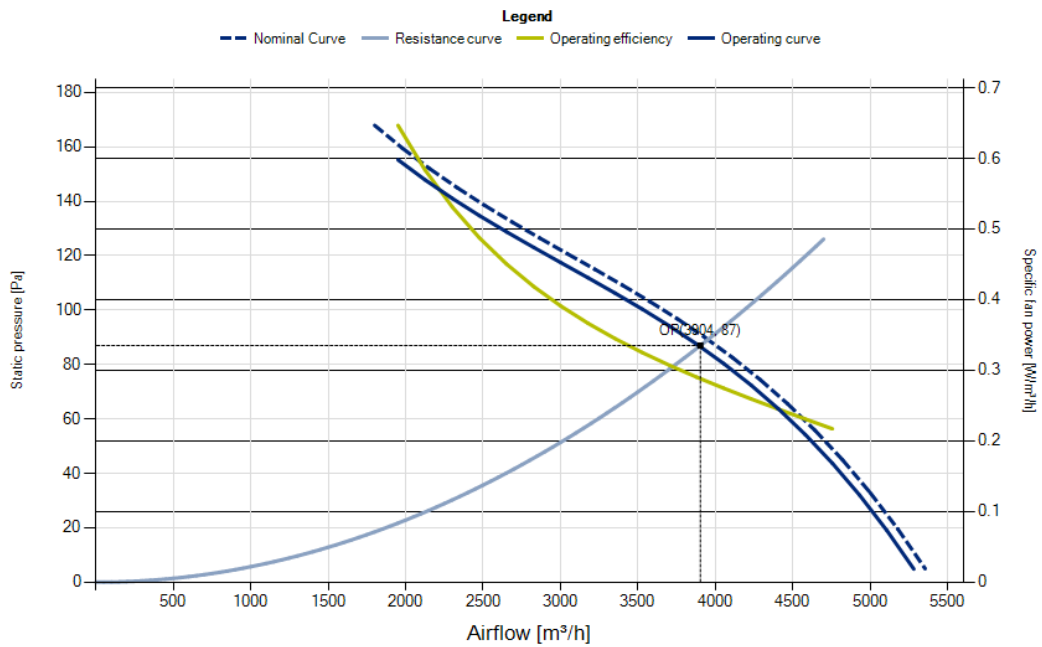


Measured according to ISO 5801, installation type A. Measured in full bell mouth without guard grill.

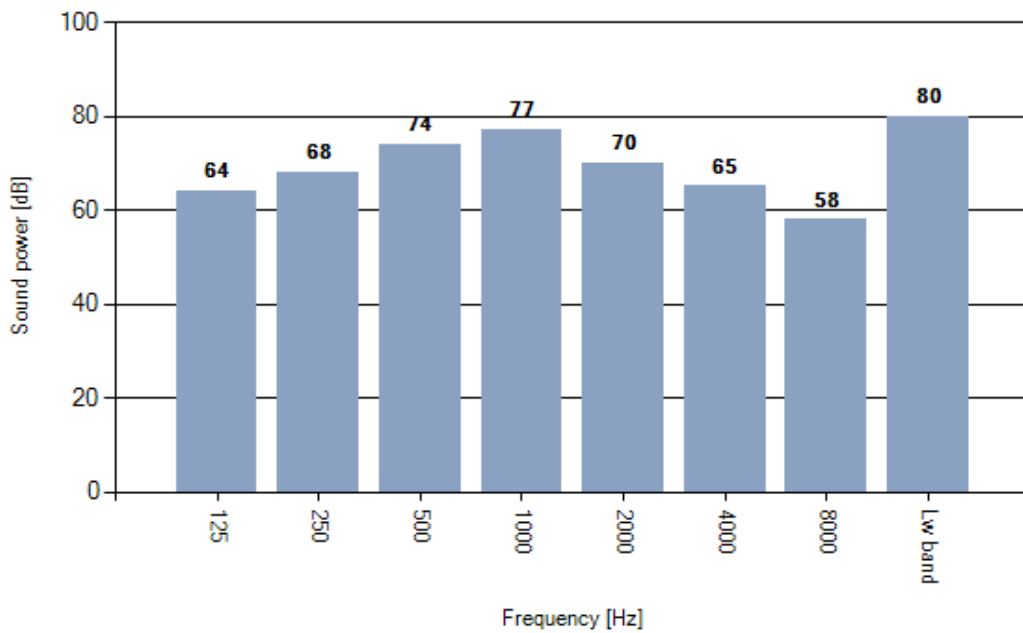
Input power



Specific fan power

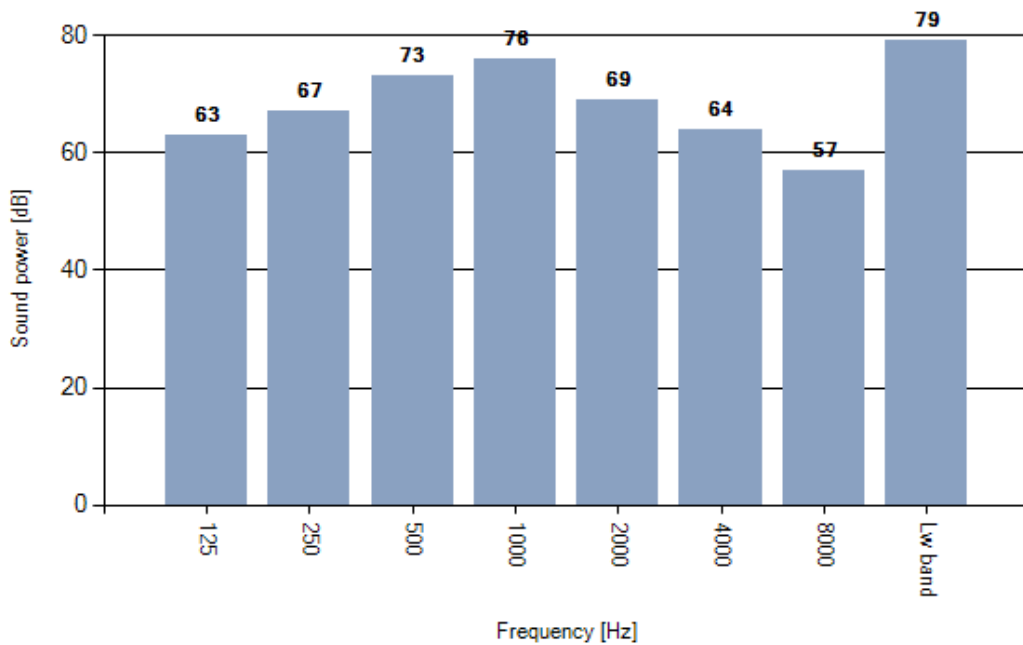


Weighted octave sound power spectrum Outlet



Measured according to ISO 3744 and ISO 13347, installation type A. Measured in full bell mouth without guard grill. The value given may vary according to actual installation of the unit.

Weighted octave sound power spectrum Inlet



Measured according to ISO 3744 and ISO 13347, installation type A. Measured in full bell mouth without guard grill. The value given may vary according to actual installation of the unit.