

Customer	Date	2016-08-23
Contact	Project	
Phone number	Project no.	
Email		

LNES 80-250/40/P45VCC4

101887330

Operating data

Pumpe type	Single head pump	Fluid	Water, pure
No. of pumps / Reserve	1 / 0	Operating temperature t A	°C 4
Nominal flow	m ³ /h 55	pH-value at t A	7
Nominal head	m 14,4	Density at t A	kg/dm ³ 1
Static head	m 0	Kin. viscosity at t A	mm ² /s 1,569
Inlet pressure	bar 0,098	Vapor pressure at t A	bar 0,0234
Environmental temperature	°C 20	Solids	0
Available system NPSH	m 0	Altitude	m 1000

Pump data

Make	Lowara	Nominal	m ³ /h 54,2 (54,2)
Speed	1/min 1450	Flow	Max- m ³ /h 90
Number of stages	1	Min-	m ³ /h 15,6
Max. casing pressure	bar	Nominal	m 14
Max. working pressure	bar 1,6	Head	at Qmax m 8,4
Head H(Q=0)	m 16	at Qmin	m 16,2
Weight	kg	Shaft power	kW 2,8 (2,8)
Impeller R	Max. mm 258	Max. shaft power	kW 3,5
	designed mm 215	Efficiency	% 72,63
	Min. mm 195	NPSH 3%	m
Suction nozzle	DN 80 PN 16 EN1092-2 (NSC-LNE)	Discharge nozzle	DN 80 PN 16 EN1092-2 (NSC-LNE)

Pump Materials

Volute casing	Cast iron
Casing cover	Cast iron
impeller	Cast iron / ASTM Class 30
Stub shaft	Stainless steel
Wear ring	Stainless steel / AISI 304
Impeller nut	Stainless steel
Impeller washer	Stainless steel
Impeller key	Stainless steel / AISI 316Ti
Plug	Stainless steel / AISI 316Ti

Shaft Seal

Mechanical Seal	
e-NSC, e-LNE - MG1S2	Burgmann
Rotating Assembly	B-Resin impregnated carbon
Fixed Assembly	Q1-Silicon carbide
Elastomers	E - EPDM
Springs	G-AISI 316
Other Components	G-AISI 316

Motor data

Manufacturer	Lowara	Electric voltage	220/380 V
Specific design	IE3 Three phase surface motor		
Type	PLM4112.../340 E3	Electric current	15,0/8,23 A
Rated power	4 kW	Degree of protection	IP 55
Speed	1450 1/min	Insulation class	F
Frame size	112	Weight	57 kg
Shaft diameter	0 mm	Colour	RAL 5010

Coupling

Manufacturer	
Series	
Type	
Frame size	
Spacer length	
Weight	
Coupling protection	

Base plate

Description	
Weight	

Remarks:

Customer	Date	2016-08-23
Contact	Project	
Phone number	Project no.	
Email		

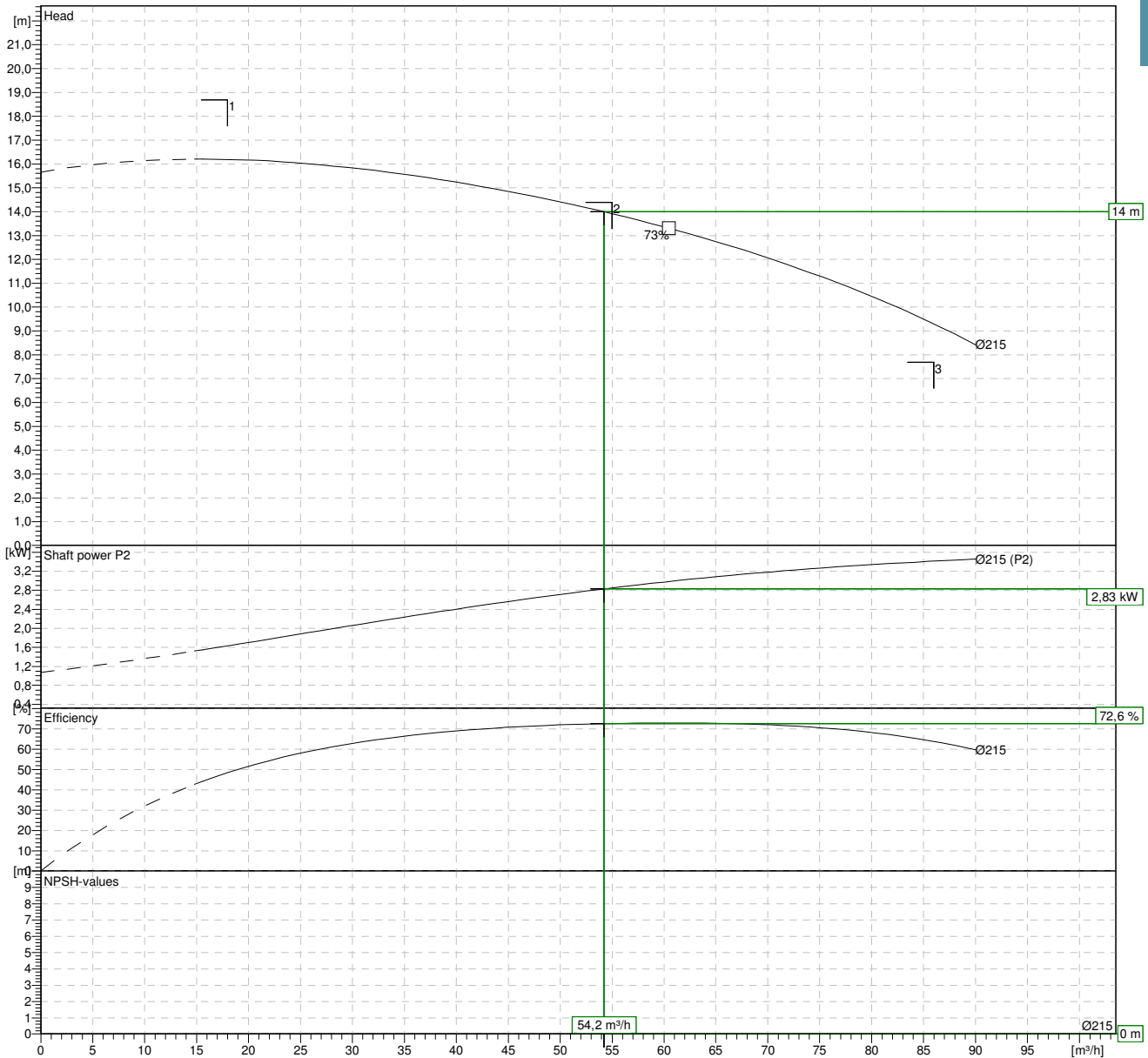
LNES 80-250/40/P45VCC4

101887330

Hydraulic data

Operating Data Specification		Hydraulic data (duty point)		Impeller design	
Flow	55 m ³ /h	Flow	54,2 m ³ /h	Impeller R	215 mm
Head	14,4 m	Head	14 m	Frequency	50 Hz
Static head	0 m	MEI >=0,4		Speed	1450 1/min

Power data referred to:
 Water, pure [100%]; 4°C; 1kg/dm³; 1,57mm²/s
 Performance according to ISO 9906 - Annex A



Customer	Date	2016-08-23
Contact	Project	
Phone number	Project no.	
Email		

LNES 80-250/40/P45VCC4
101887330

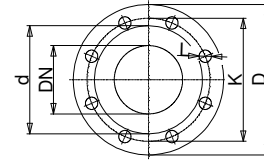
Dimensions mm / m³

AD	168		
b1	185		
Bmax	353		
DND	80		
DNS	80		
e	132		
f	183		
H	500		
h1	265		
h2	235		
L	713		
p	214		
x	130		
		Total weight	106 kg

Connections mm

Suction nozzle	Discharge nozzle
DN 80	DN 80
PN 16	PN 16
EN1092-2 (NSC-LNE)	EN1092-2 (NSC-LNE)

C	22	C	22
D	200	D	200
df	132	df	132
DN	80	DN	80
K	160	K	160
L	8 x 19	L	8 x 19



Value C, D may vary from Standard

Drawing

